



Reading School Biology Department



University of  
Reading

# Pharmacology Inspire Lecture

## Stem Cell Biology



Presented by

**Dr Angela Bithell**

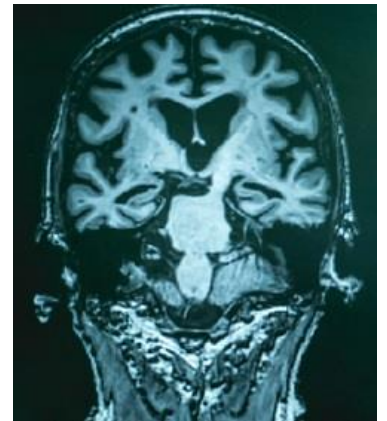
Angela is a Stem Cell Biologist who specialises in epigenetics (the study of the changes in gene function that do not stem from changes in DNA structure)

**Monday 10<sup>th</sup> December 2018 at  
15:30 in the Lecture Theatre**

## Year 9-13 Pupils Only

As a lecturer in Stem Cell Biology and Regenerative Medicine, her research has led to the development of 3D 'brain network' models in vitro. The in vitro models have been specially created to help us build a better understanding of central nervous system diseases and their causes. By mimicking features of healthy human brains and brains affected by Alzheimer's disease, Angela's work aims to identify and test life-changing new drugs.

*"Developing more relevant human in vitro models of disease can help us to better investigate the underlying causes. As such, they may also help to identify new therapeutic targets and test drug candidates."*



For further information contact Mrs J Chhokar or Miss P Hutchinson.

Click here [Online Form](#) to confirm attendance.

Arranged by Mrs F Howson (Head of Biology)

Enthral

Inspire

Educate

Challenge

Debate

Engage

READING SCHOOL, Erleigh Road, Reading RG1 5LW

T: 0118 9015600

F: 0118 9353505

E: [events@reading-school.co.uk](mailto:events@reading-school.co.uk)

W: [www.reading-school.co.uk](http://www.reading-school.co.uk)

Reading School is an Exempt Charity under Schedule 2 of the Charities Act 1993, and is recognised as charitable by HM Customs and Excise, ref. no. XT35863. Registered address as above, a company limited by guarantee, registered in England no. 7475515.